

haku DRAGON SCARF



A SEWING PATTERN BY



dragon scarf

Whether Eastern or Western style, dragons' extra long slithery bodies make them perfect for transforming into scarves. This one was made to look like Haku from the Ghibli movie "Spirited Away," but the cute head shape and versatile horn, ear, and spike patterns can switch it up to whatever dragon you can come up with!

DIFFICULTY:



This one might take longer than it looks since the body alone is about 60" long, then there's all the detail in the head to contend with. The techniques are likely familiar to a confident beginner, but be prepared for extra-long seams.

MAKES:

One scarf, about 4½" wide and 55"-65" long depending on your fabric

SKILLS USED:

- Fusible web applique
- Ladder stitch
- Sewing curves
- Gathering stitch
- Basting



sew desu ne?

| WWW.CHOLYKNIGHT.COM |

materials & tools:

- ½ yd. of 54"-60" wide fabric for main body
- ⅓ yd. of 54"-60" wide accent fabric for spikes
- ⅛ yd. of accent fabric for horns
- ⅛ yd. of inner ear fabric
- 2" x 3" piece of black applique fabric (felt, cotton, etc.) for pupils
- 2" x 4" piece of brown applique fabric (felt, cotton, etc.) for irises
- 2" x 2" piece of gray applique fabric (felt, cotton, etc.) for nose bridge
- 1" x 1" piece of pink applique fabric (felt, cotton, etc.) for nose
- 2" x 2" piece of white applique fabric (felt, cotton, etc.) for eye shines
- 5" x 5" piece of light or heavy duty fusible web
- sewing thread to match main fabric and applique fabrics
- poly-fil stuffing
- basic sewing tools (sewing machine, scissors, iron, needles, pins, fabric marker, seam ripper)

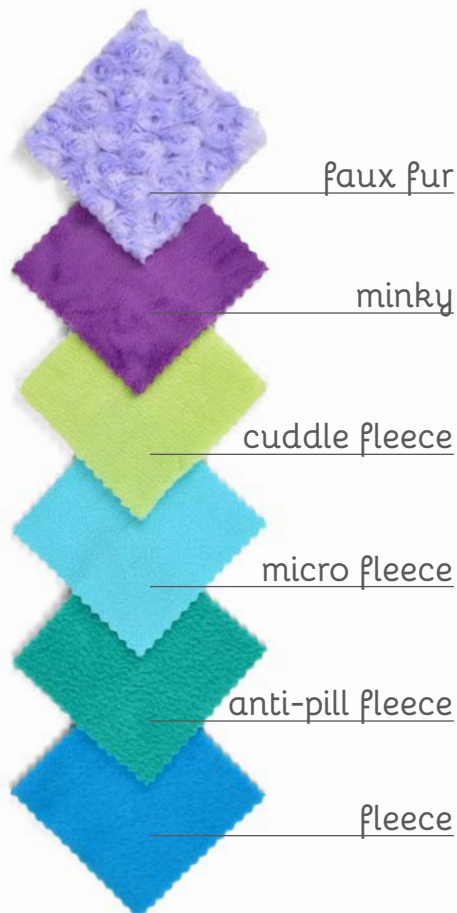
SUGGESTED FABRICS:

Plush, stretchy fabrics such as fleece or minky are suggested due to the shape of the head. The body of the scarf can be anything particularly soft and fluffy.

The variations of fleece and minky mentioned to the left would work well, but really any plushy fabric with a bit of stretch on the crosswise grain will suit this pattern.

Stretch fabrics like **FLEECE** or **MINKY** will create a more squat, round shape when stuffed.

Non-stretchy fabrics, like **FELT** or **COTTON**, won't stretch when stuffed so the resulting plush will look elongated as shown.



MINKY

VS.

FELT

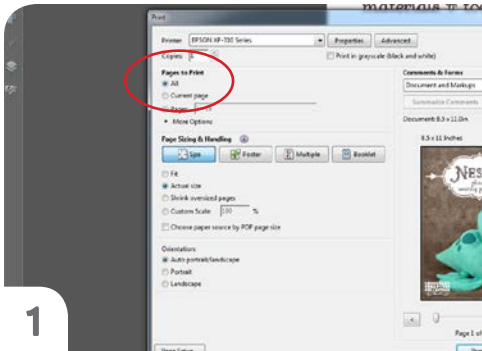


sew desu ne?

| WWW.CHOLYKNIGHT.COM |

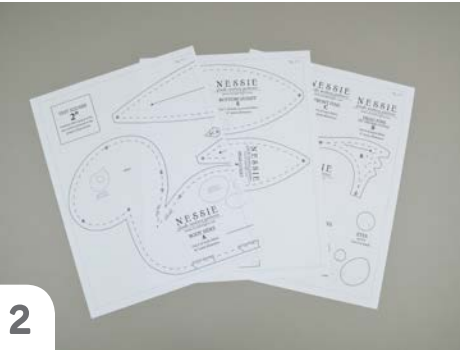
printing the pattern:

To print the pattern, set your computer to print **PAGES 17-21**. If you're unfamiliar with printing and assembling a .pdf pattern, read the steps below.



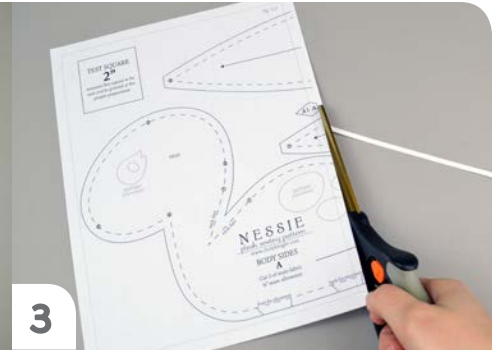
1

At the print dialog box, check the box that says print at "Actual Size" or 100%. Any other selection (such as "Fit to page") will distort the pattern so it's slightly larger or smaller and we don't want that.



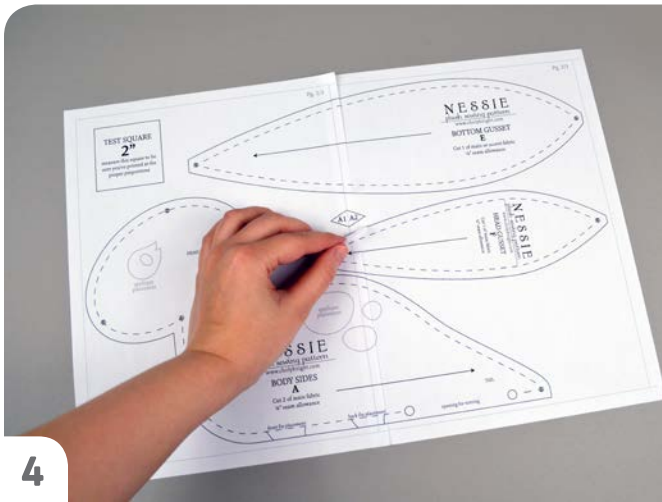
2

Print the pages needed for the file. You might have one or more. Either way, be sure you have the full collection by noting the page numbers in the corner.



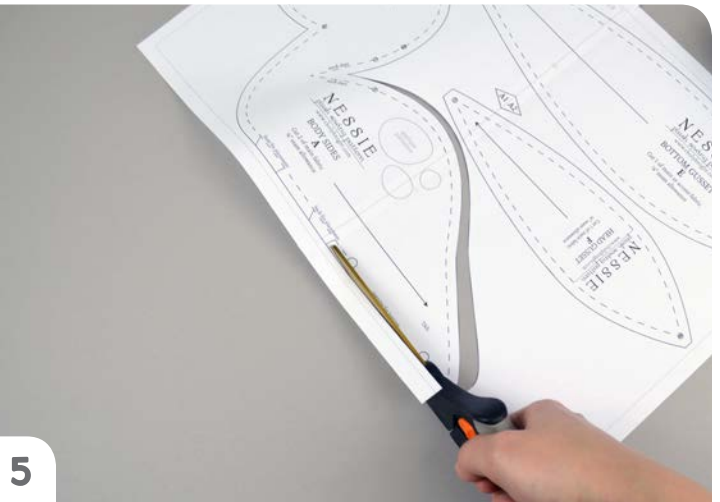
3

It's likely your printer will have a margin that ensures your image doesn't print to the very edge. Assembly will be easier if you trim off this blank margin edge. This will give you pages that overlap slightly during assembly. If you trim across the gray outline boxes, this will give you pages that don't overlap but rather butt against each other.



4

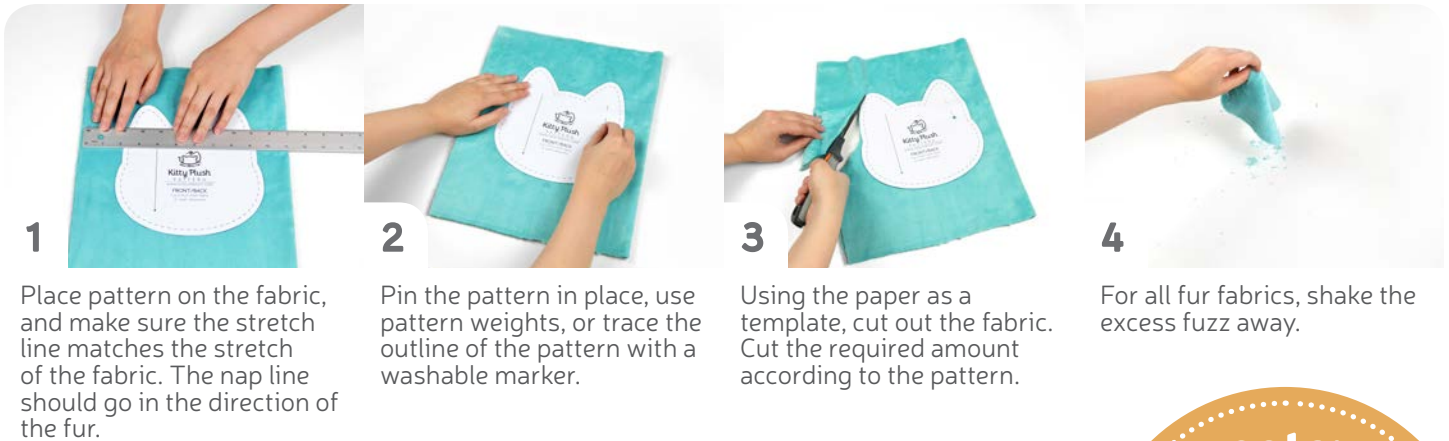
To line up the pattern pages, match up the corresponding diamond shapes. Each diamond will have a letter, so it's simply a matter of matching A1 to A2, B3 to B4 and so on. The faint gray lines indicate the border of every page, you should be able to line those up as well. When the diamond goes together, tape it in place. If you have many pages, it's easier to tape up the pages into rows first. Then tape the rows together into a full block.



5

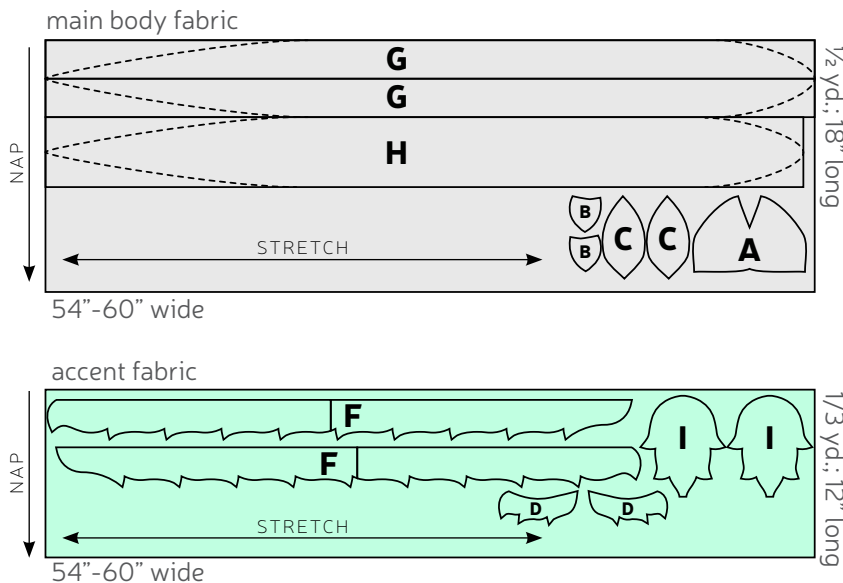
You can trace the patterns onto a different paper, or you can also just cut them straight from the printer paper -- be sure that each piece is fully taped together along the joins so they don't fall apart when you cut them.

cutting the fabric:

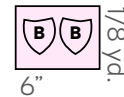


cutting layout:

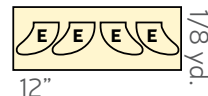
- Cut 2 strips from your main body fabric, 2 $\frac{3}{4}$ " wide by however long your fabric is. This is the Scarf Top (G)
- Cut 1 strip from your main body fabric, 5" wide by however long your fabric is **MINUS 1 INCH** This is the Scarf Bottom (H)



inner ear fabric



horn fabric



BEFORE YOU BEGIN:

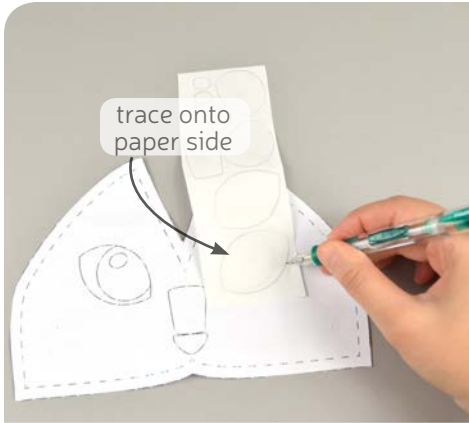
- Briefly read the project instructions so you know what to expect.
- If desired, mark the cut fabric pieces with the markings and symbols from the pattern. Or wait until the applicable step before transferring.
- Note that the seam allowance used is $\frac{1}{4}$ " throughout the project.

sew desu ne?

| WWW.CHOLYKNIGHT.COM |

dragon scarf

SEWING TUTORIAL



1. PREPARE THE FACE APPLIQUE

- Take your fusible web and trace the eye and nose pieces onto the smooth (paper) side. You should have two pupils, two irises, two eye shines, one nose bridge, and one nose. Fuse the bumpy (adhesive) side onto the wrong side of your applique fabric. Irises: brown, pupils: black, eye shines: white, nose bridge: gray, and nose: pink.
- Cut out the face pieces and arrange them on the Head Front (A) piece of your main fabric. You can do this by setting your paper pattern on top of the fabric piece (right sides up), align the eye piece on top where the placement markings are, then carefully pull the paper pattern away while holding the applique piece in place.

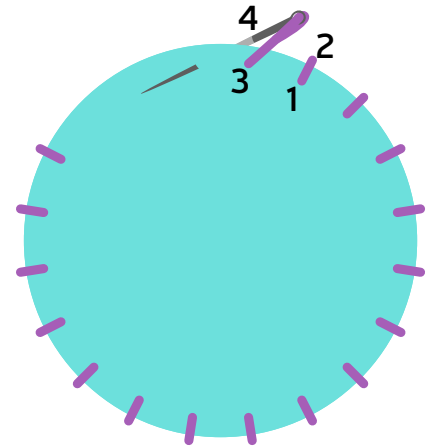
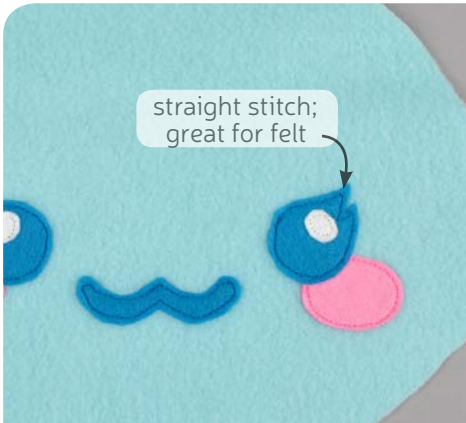


2. SEW THE APPLIQUE

- Fuse the eye pieces in place with your iron (use a press cloth -- such as a scrap piece of cotton -- if you're using a polyester or fur fabric like minky).
- If you used heavy duty fusible web, you can keep the pieces fused without sewing, or you can sew them in place a number of ways. I've used a zigzag stitch here.
- Refer to the next step for some other applique options.

dragon scarf

SEWING TUTORIAL

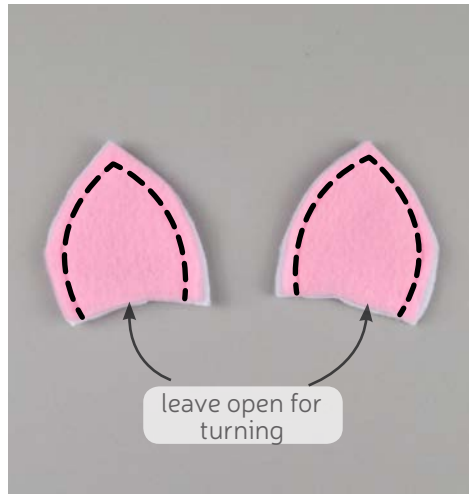
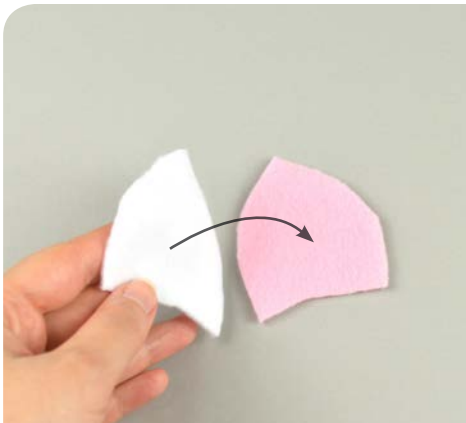


2a. OTHER APPLIQUE OPTIONS

Other good options for applique include a straight stitch, which involves sewing around the edge of the applique pieces with a straight stitch using matching thread -- about 1/8" in from the edge.

You can also applique by hand; I prefer a whipstitch. Thread a hand-sewing needle with some matching thread and knot it. Bring the thread up from the back of the project; about 1/8" in from the edge of the applique shape. Bring it down perpendicular from the curve, just outside of the applique shape. This completes one stitch.

For the next stitch, bring the needle back up about 1/8" away from the previous stitch and 1/8" in from the edge just as in the first stitch. Once again, bring it down just outside the applique shape. Continue this way until you've sewn around the shape.



3. SEW THE EARS

- Gather up your Ear (B) pieces. Align one outer ear fabric and one inner ear fabric together with right sides facing and edges lining up.
- Sew the two together along the long curved edges. Leave the short curved edge free for turning right side out later. Repeat with the remaining two ear pieces and you should have a mirrored pair.
- Trim the excess seam allowance at the corner to reduce bulk when turning.

sew desu ne?

| WWW.CHOLYKNIGHT.COM |



4. BASTE THE EARS

- Turn both ears right side out, you should have a set that are mirror opposites of each other.
- Refer to the Ear paper pattern to find the fold line for the ear. Fold the finished ears along the fold line with the inner ear fabrics facing. Baste the bottom edge in place to hold it in preparation for the next step.
- If you haven't already, transfer over the markings from the Head Front paper pattern that show where to align the ears. Align the raw edge along the top of the head front where the markings show. Be sure that the folded edge is pointed towards the middle and the inner side is facing the front of the head.



5. ADD THE HEAD BACK

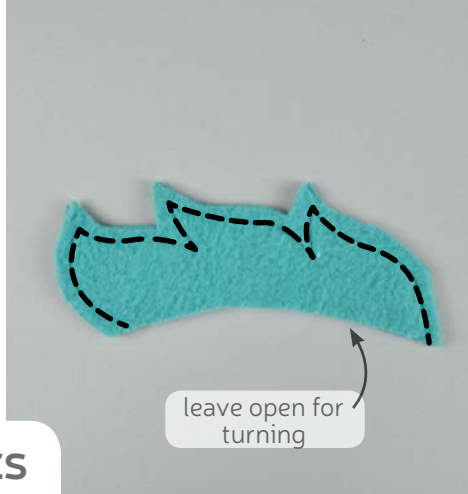
- Once the ears are pinned, baste them in place within the seam allowance so they're held while we sew the rest of the head.
- Gather up your Head Back pieces (C). Grab one and line up the curved edge with the edge you just basted an ear to. The fat end of the back piece should be at the bottom of the Head Front, but you can also match up the circle markings on the pattern to be doubly sure. Pin the pieces in place.
- With both head back pieces pinned, sew them to the head front.

basting:

A form of temporary sewing meant to hold pieces in place. A long stitch length is often used for this reason. The finished result is not meant to be seen and sometimes is even removed later (depending on your project).

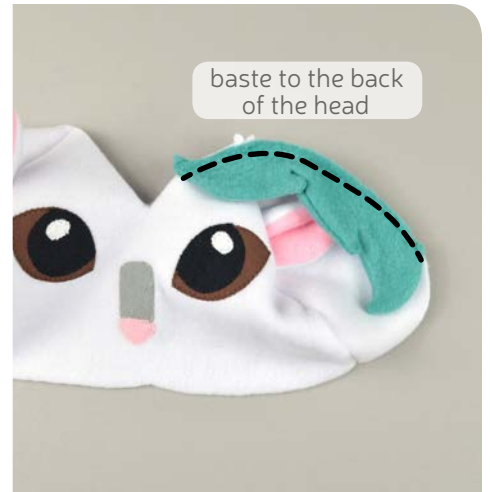
sew desu ne?

| WWW.CHOLYKNIGHT.COM |



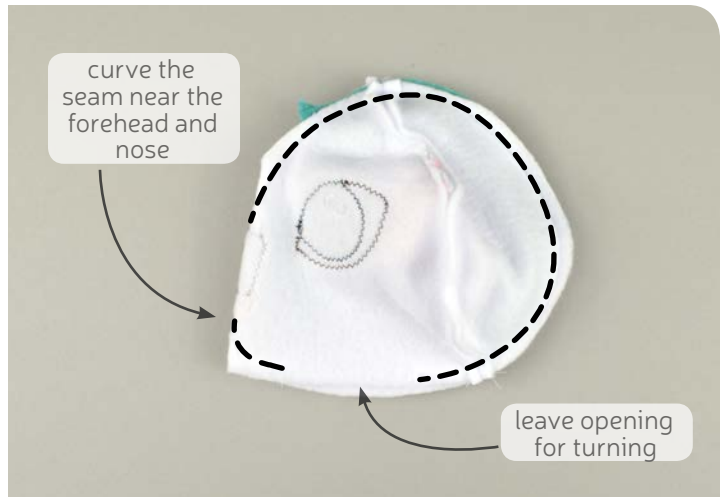
6. SEW THE HEAD SPIKES

- Gather up your two Head Spike pieces (D) and align them together with right sides facing and edges matching up.
- Sew them together along the long jagged edge, being sure to pivot at each corner. Leave the shorter curved edge free for turning right side out later.
- Clip the excess seam allowance at the outer corners to reduce bulk, and at the inner corners to increase flexibility when turning.



7. ATTACH THE HEAD SPIKES

- Turn the spikes right side out and define the corners with a chopstick or similar blunt tool.
- If you haven't already, locate the spike placement line found on the paper pattern for the head front and back pieces. Transfer them over to the right side of the head front and back fabric. Bend the spikes so the open end fits within the placement lines and pin in place. Be sure the points on the spikes are pointing toward the bottom of the head.
- Baste the spikes in place once everything is aligned how you want.



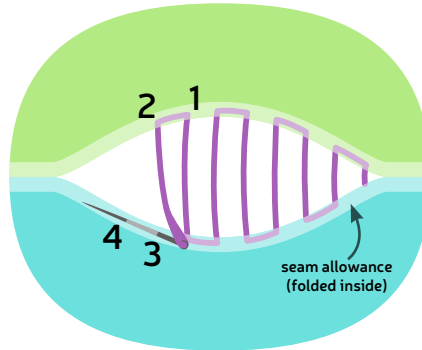
8. COMPLETE THE HEAD

- Fold the head in half widthwise down the center (where the nose is). Match up the edges. The seams where the back meets the front should match up.
- If you haven't already, locate the opening for turning markings found on the paper pattern for the head front. Transfer them over to the wrong side of the head front piece. Or just make about a 2" mark near the chin.
- Sew around the raw edges of the head, leaving an opening for turning at the mark you just made. Also be sure to curve your seam near the forehead and just below the nose so the finished head has a nice round shape and isn't pointy.



9. STUFF THE HEAD

- Turn the head right side out through the opening and stuff it with stuffing. Be sure to start with a good ball in the nose area so it's full. Then fill out the back and bottom, working your way toward the opening.
- Once the head is stuffed, make sure the seam allowances in the opening are tucked inside and prepare to ladder stitch it closed. Thread a hand-sewing needle and knot it at the end. Insert the needle from the inside of the opening and out of the head near one edge of the opening. This will leave the knot inside the head.

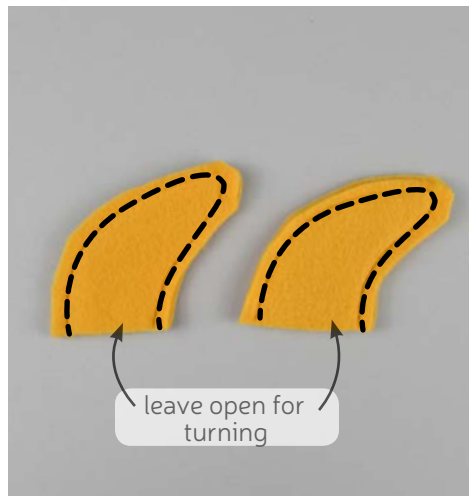


10. CLOSE UP THE HEAD

- Continue from here doing a ladder stitch. Take a 1/8" stitch into the fold of one side of the opening, then go across and take another. Keep going down the opening until you reach the end.
- When you're finished, stitch a knot into the end of the seam. Then insert the needle near the finished knot and out of the plush about 1-2" away.
- Pull the thread through and hold it taut while snipping the thread. The excess thread should sink back inside the plush -- all hidden!

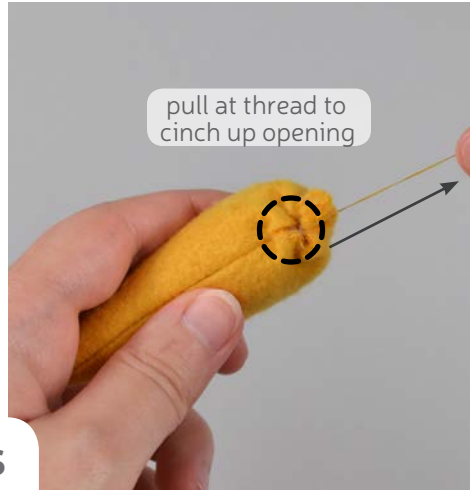
tip:

Give the head one last look before you finish closing it up. Check to be sure it doesn't need more stuffing -- you can always add little bits through the small hole!



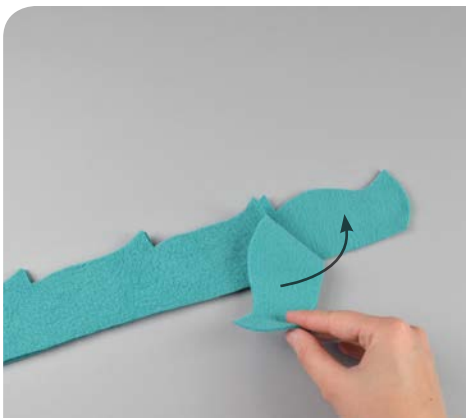
11. SEW THE HORNS

- Gather up your Horn pieces (E). Align two of them with right sides facing and edges matching up.
- Sew them together along the long curved edge, leaving the straight edge free for turning right side out.
- Turn the horns right side out and stuff them semi-firmly with stuffing. Be sure the tips are fully stuffed before moving onto stuffing the rest.



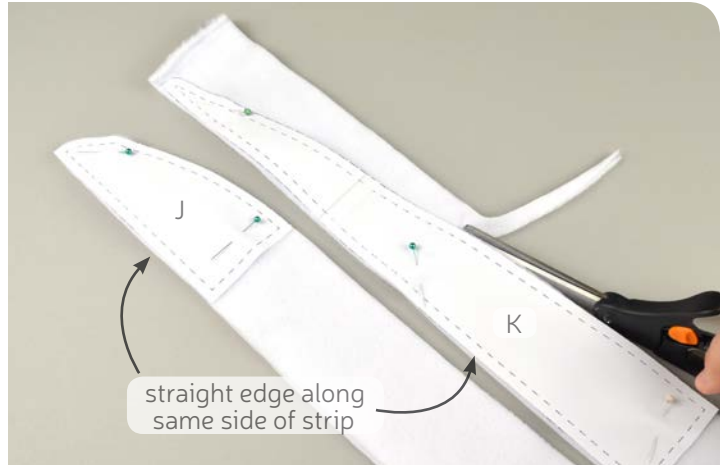
12. ATTACH THE HORNS

- Thread a hand sewing needle with black thread and knot the end. Sew a long gathering stitch around the opening of the horn, about 1/8" away from the edge.
- Once finished, pull at the thread to gather the fabric and cinch up the opening. Sew a few knots at this opening to hold it closed. If you have a lot of thread left, consider leaving it attached for adding to the head.
- Position the horn centered along the top head seam. It should be centered between the ear and the spikes. Make sure the tip of the horn is pointing backward. Once it's aligned pin the horn around the base, then sew it in place with a ladder stitch as you did back in step 10. Repeat for the other horn to complete the head.



13. SEW THE BODY SPIKES

- Gather up your two Body Spike pieces (F) and align them together with right sides facing and edges matching up.
- Sew them together along the long jagged edge, being sure to pivot at each corner. Leave the long straight edge free for turning right side out later.
- Clip the excess seam allowance at the outer corners to reduce bulk, and at the inner corners to increase flexibility when turning.
- Turn the piece right side out and define the corners with a chopstick or similar turning tool.



14. TRIM THE BODY TOP PIECES

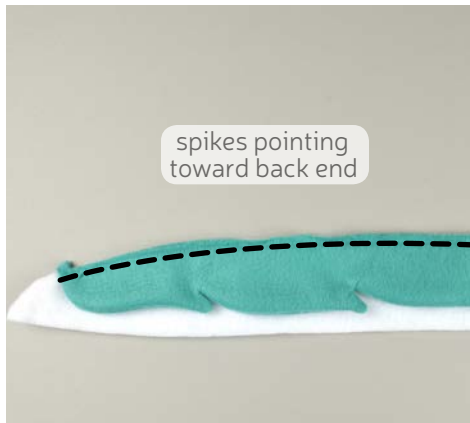
- Gather up your Body Top pieces (G) and your Body Front & Back trimming pieces (J & K). Align the top pieces with right sides facing. Overlap the Body Front trimming piece along one end so the curved tip points toward the end of the strip. Trim the fabric using the paper as a template. This is now the front of the scarf.
- Repeat with the other end of the strip and the Body Back trimming piece. This is now the back end of the scarf.
- **IMPORTANT:**
Be sure the long straight side of the trimming pieces are along the same side of the strip like so:



15. TRIM THE BODY BACK PIECES

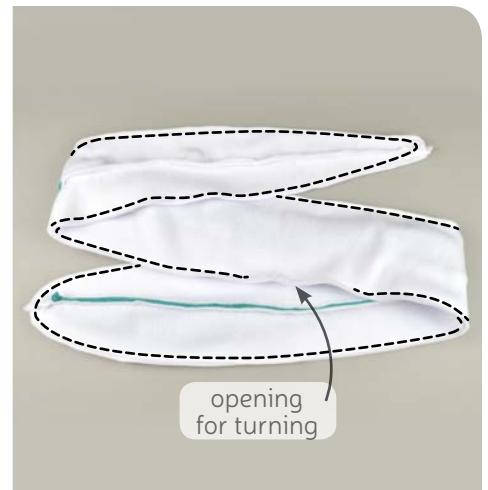
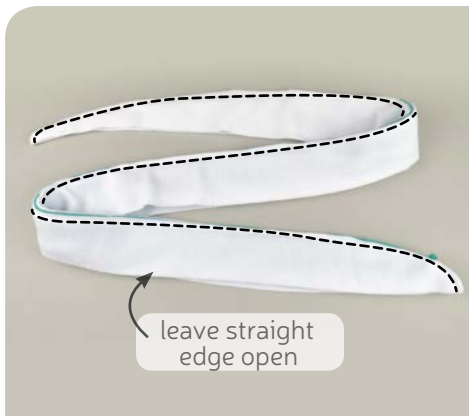
- Gather up your Body Back piece (H) and your Body Front & Back trimming pieces (J & K). Fold the piece in half lengthwise with right sides facing so it's even skinnier. Align the Body Front trimming piece along one end so the curved tip points toward the end of the strip and the straight edge extends $\frac{1}{4}$ " past the fold. Trim the fabric using the paper as a template. This is now the front end of the scarf.
- Repeat with the other end of the strip and the Body Back trimming piece. This is now the back end of the scarf.
- **IMPORTANT:**
Be sure the long straight side of the trimming pieces are along the folded side of the strip like so:





16. BASTE THE BACK SPIKES

- Align the open end of the back spikes along the curved edge of the body top (right sides both facing up). The spikes should start about 3" in from the front end of the body. The spikes should be pointing toward the back end of the body. Continue pinning the spikes in place down the length of the body until you reach the end. Note that the spikes do not go all the way to the end of the body -- they stop around 10" short (depending on your fabric length).
- Baste the spikes in place down the length of the piece.
- Layer the other body top piece over it with right sides facing and edges matching up. This should sandwich the body spikes inside.



17. SEW THE BODY TOP PIECES

- Sew the body top pieces together along the long curved edge, sandwiching the spikes inside. Leave the long straight edge open for attaching to the body bottom pieces later.
- Grab your body bottom piece and align them with right sides facing and edges matching up. Be sure that the front (fat) end of the body matches up as well as the back (skinny) tail end.
- Sew around the perimeter of the scarf, but be sure to leave a 4-5" opening near the middle for turning right side out later.



18. CLOSE UP THE SCARF

- Turn the scarf right side out through the opening for turning and define the tight curves (especially the tail) with a chopstick or similar blunt tool.
- Tuck under the seam allowances in the opening for turning the scarf the opening closed with a ladder stitch like you did back in step 10.



19. SEW THE TAIL

- Gather up your Tail pieces (1). Align them with right sides facing and edges matching up.
- Sew around the perimeter of the tail, being sure to pivot at the outer and inner corners.
- Trim the excess seam allowance at the outer corners to reduce bulk, and clip the inner corners to increase flexibility.



20. ATTACH THE TAIL

- To turn the tail, clip a small opening in the center bottom of the tail as shown. There's also a guideline on the paper pattern if you want to double check. Turn the tail right side out and define the corners with a chopstick.
- Take the (skinny) back end of the scarf and lay it over the opening of the tail, **body spikes facing up**. Pin the back end to the tail.
- Ladder stitch around the back end of the scarf to secure it to the tail.

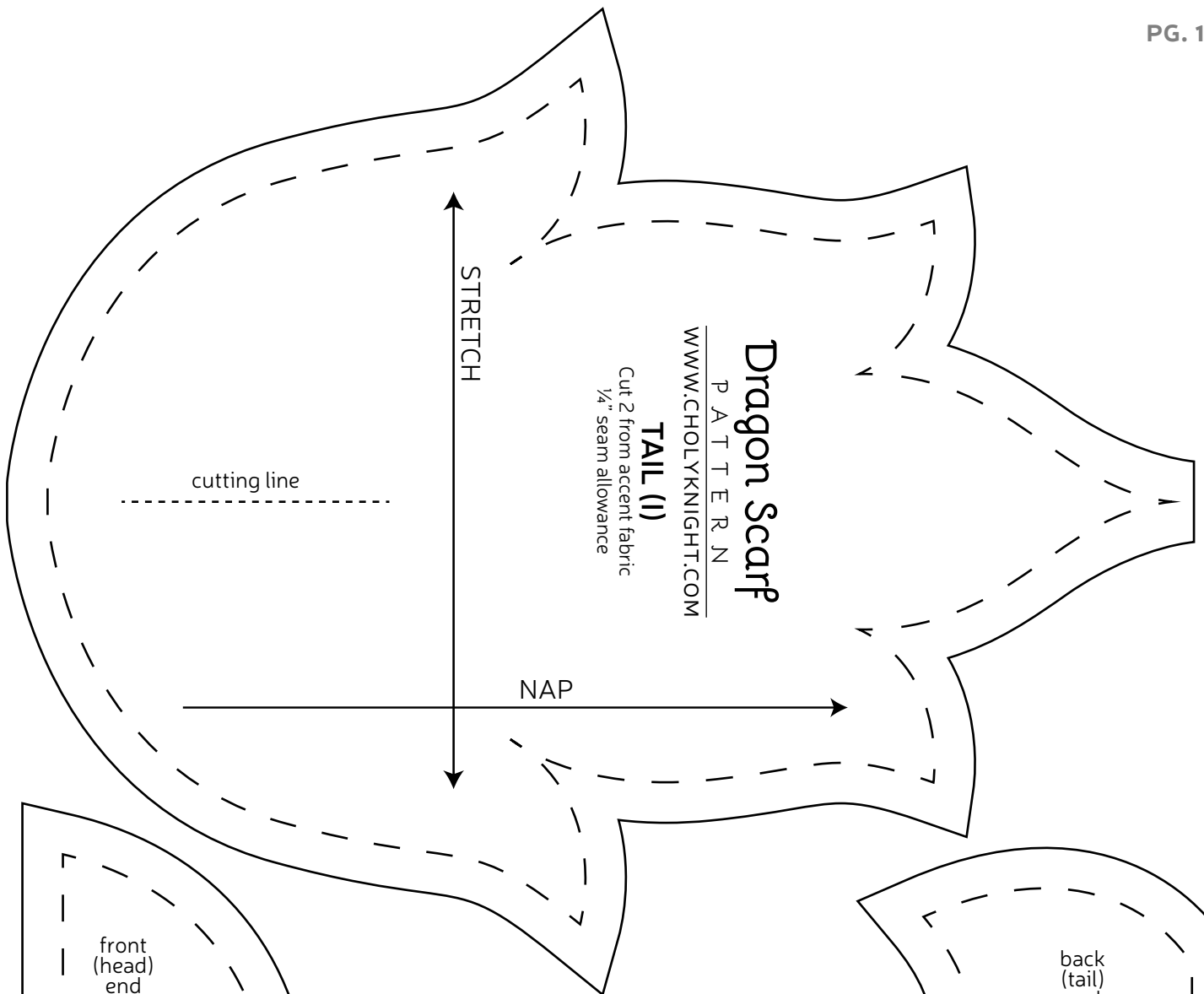


21. ATTACH THE HEAD

- Center the head on the front end of the scarf, body spikes facing up as well. The position can be up for interpretation depending on what you want. But the very end of my scarf landed where the seams intersected on the bottom of the head.
- Once you have the head positioned how you like it, secure it with a ladder stitch just as you did for the tail.



congrats!
this completes
your scarf! Now
try it on!



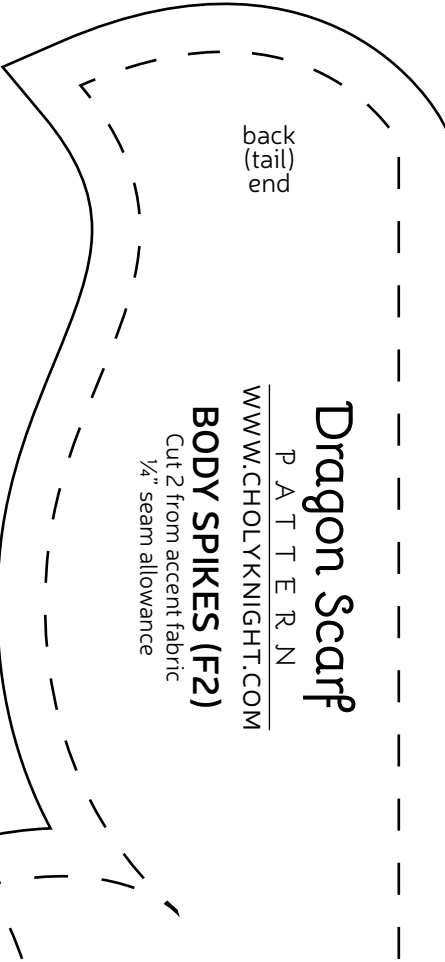
Dragon Scarf

P A T T E R N

WWW.CHOLYKNIGHT.COM

TAIL (I)

Cut 2 from accent fabric
1/4" seam allowance



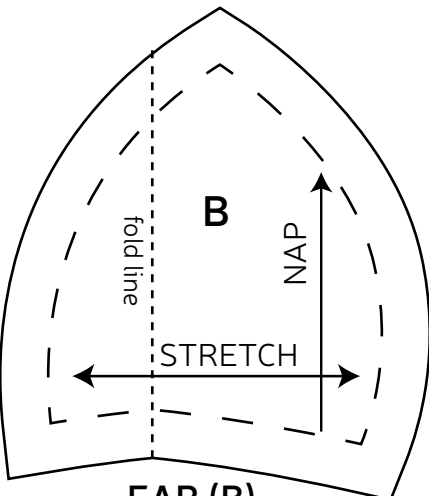
Dragon Scarf

P A T T E R N

WWW.CHOLYKNIGHT.COM

BODY SPIKES (F2)

Cut 2 from accent fabric
1/4" seam allowance



B

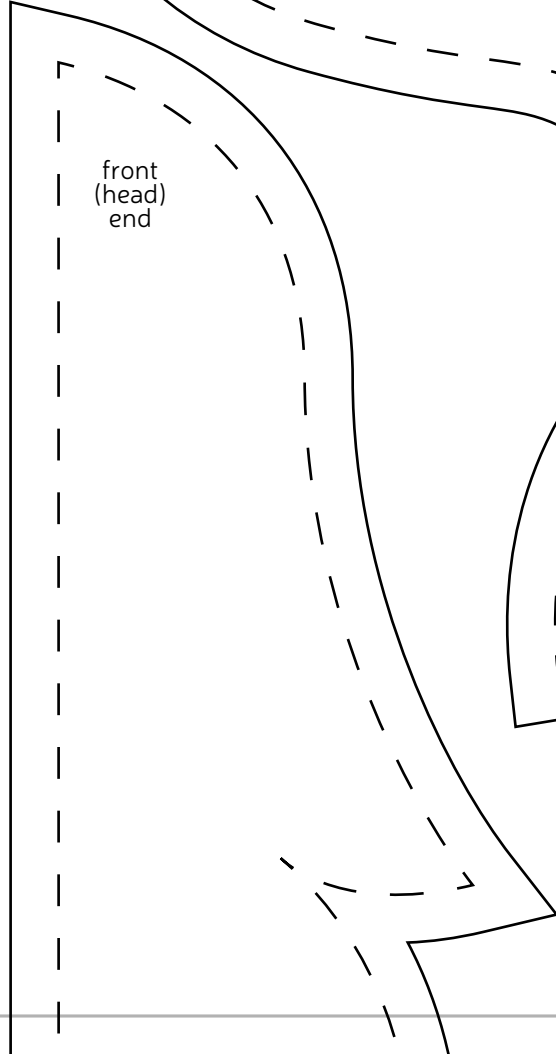
STRETCH

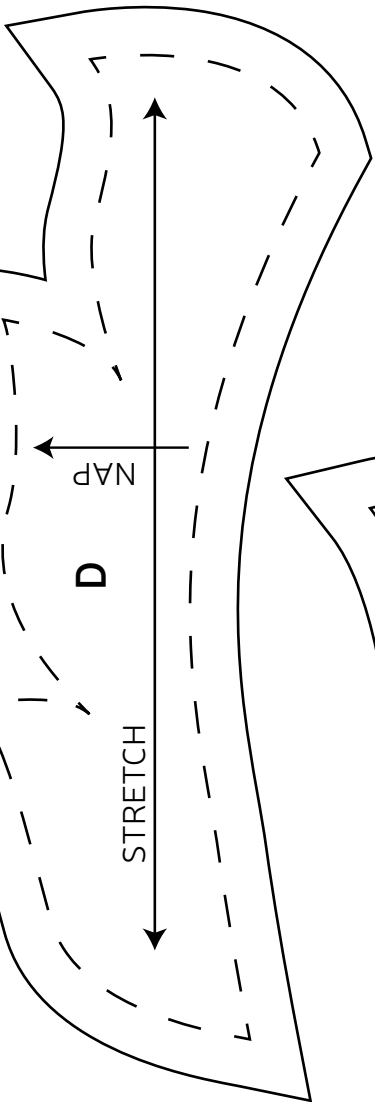
NAP

fold line

EAR (B)

Cut 2 from main fabric
Cut 2 from inner ear fabric
1/4" seam allowance





HEAD SPIKES (D)
Cut 2 from accent fabric
1/4" seam allowance

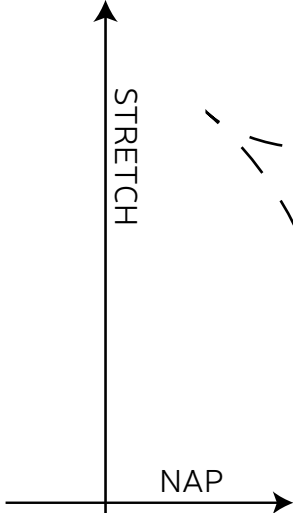
Dragon Scarf

P A T T E R N

WWW.CHOLYKNIGHT.COM

BODY SPIKES (F1)

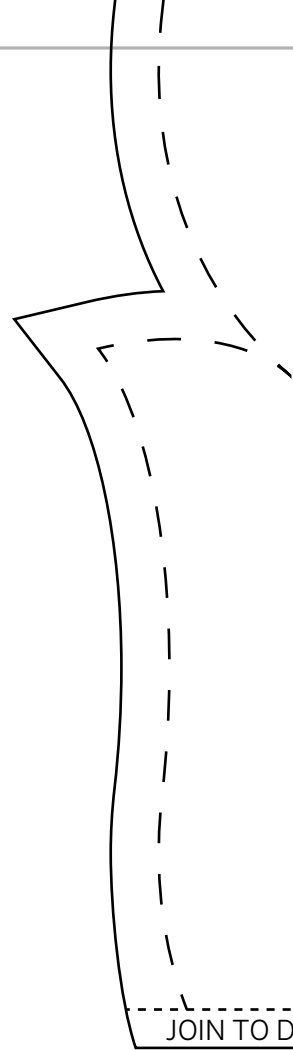
Cut 2 from accent fabric
1/4" seam allowance



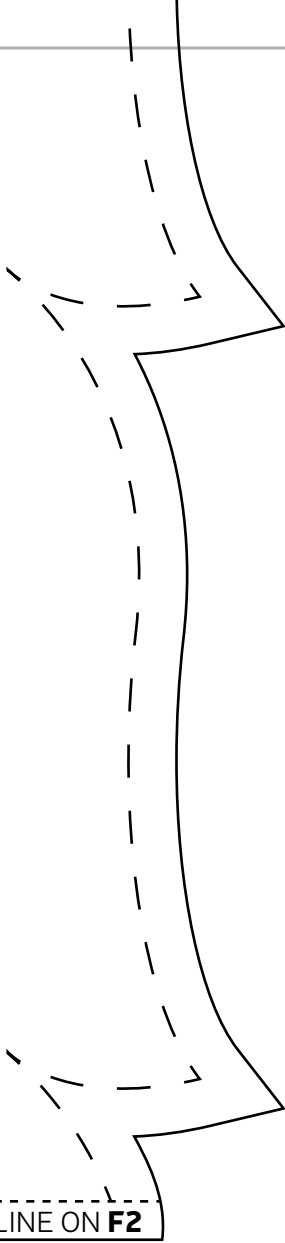


STRETCH

JOIN TO DOTTED LINE ON **F1**

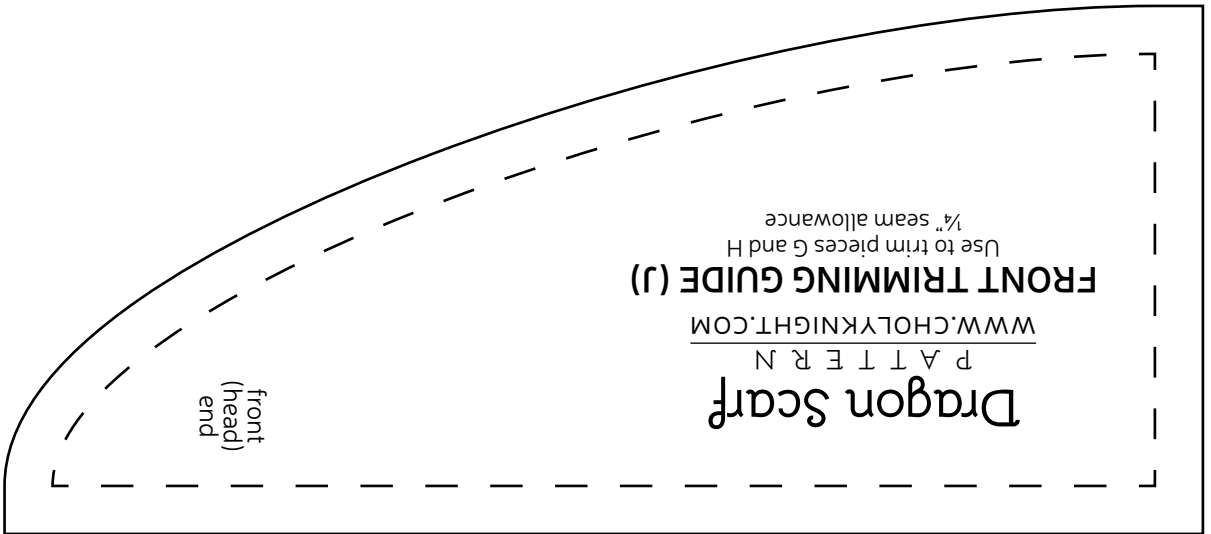


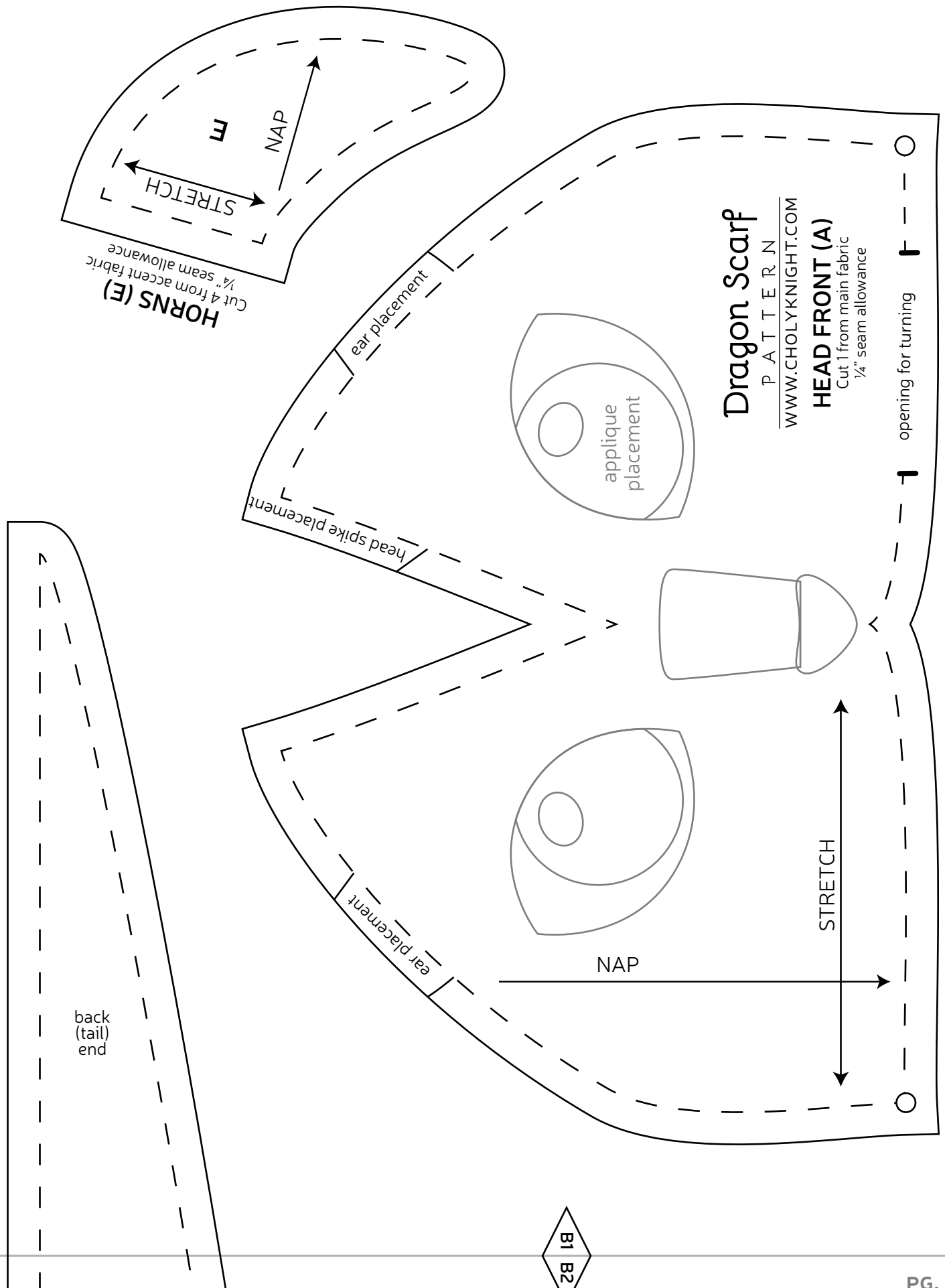
JOIN TO DOTTED LINE ON **F2**



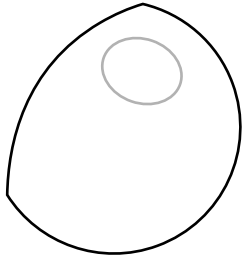
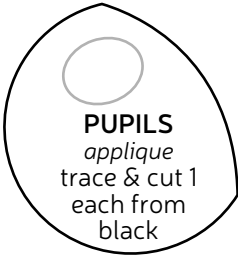
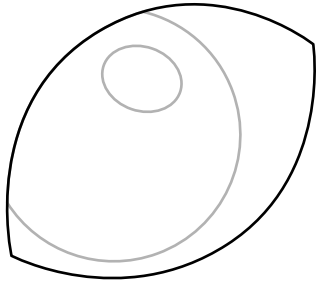
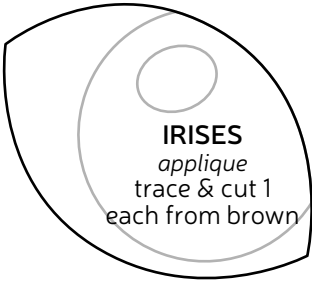
Dragon Scarf
P A T T E R N
WWW.CHOLYKNIGHT.COM
FRONT TRIMMING GUIDE (J)
Use to trim pieces G and H
1/4" seam allowance

front
(head)
end

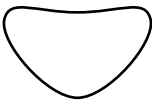
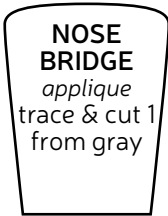




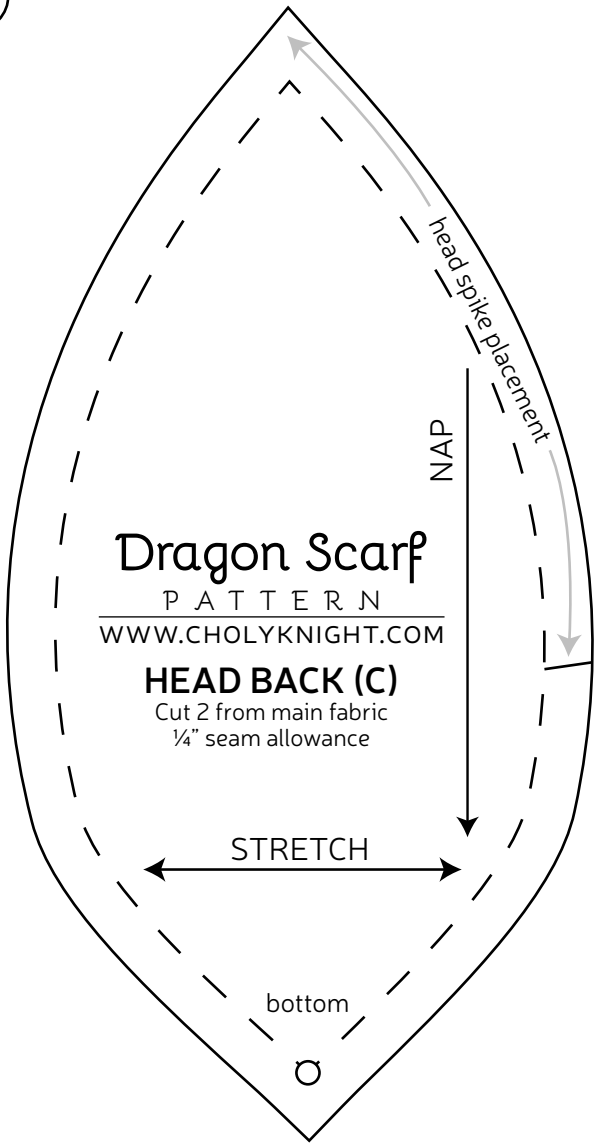
B1 B2



EYE SHINE
applique
trace & cut 2
from white



NOSE
applique
trace & cut 1
from pink



Dragon Scarf

PATTERN
WWW.CHOLYKNIGHT.COM

HEAD BACK (C)

Cut 2 from main fabric
1/4" seam allowance

Dragon Scarf
PATTERN
WWW.CHOLYKNIGHT.COM
BACK TRIMMING GUIDE (K)
Use to trim pieces G and H
1/4" seam allowance